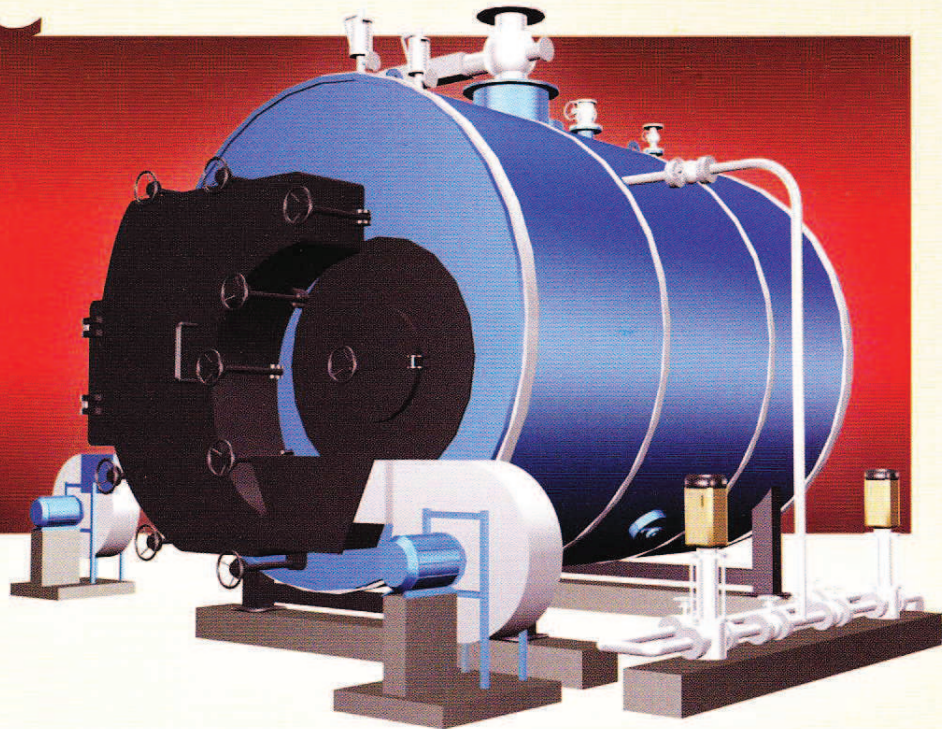


# HUSKPAC ULTRA

The 3 pass, wet back,  
integral furnace husk fired boiler

Designed with CFD, highest efficiency - 74%

POWERED BY  
**40 YEARS**  
OF PROCESS  
HEATING EXPERIENCE

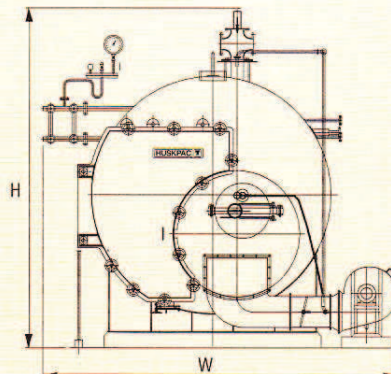
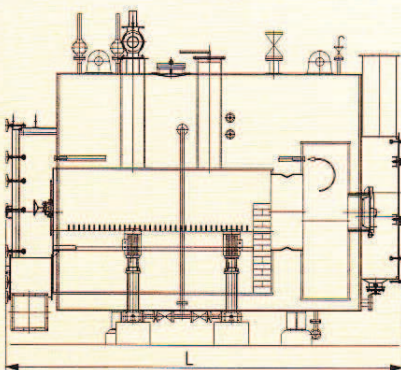


## Technical specifications

PARAMETER	UNIT	MODEL			
		HP-20BB	HP-30BB	HP-40BB	HP-50BB
Maximum output (F&A 100 deg. C)	Kg/hr	2000	3000	4000	5000
Safety valve set pressure*	Kg/cm <sup>2</sup>	10.54/17.54			
Fuel	-	Paddy Husk, Gross Calorific Value of 3100 kcal/kg, Moisture up to 10%.			
Efficiency* (Parboiled/ Raw Rice Husk)	-	74% / 72%			
Fuel consumption on MCR (Parboiled/ Raw Rice Husk)	Kg/hr	471/ 484	706/ 726	942/ 968	1177/ 1210
Power supply option	-	220/380/415 V AC ± 6%, 50/60 Hz ± 3%, 3 Phase			
Total electrical connected load**	hp	14	20	22.5	25
Length (L)	mm	4100	5200	5500	5800
Width (W)	mm	3700	4000	4500	5000
Height (H)	mm	3800	4100	4600	5100
Typical boiler house dimensions (AxB)	mtr.	22 x 11	23 x 11	24 x 11	26 x 11
Dry weight of pressure part	Tons	11	14	19	23

Note: \*\*Connected load includes FD fan, pneumatic conveying fan, control panel, vibro feeder & feed water pump. Electrical connected load will change with addition of dust collector.  
\*As per BS 845 Part 1 indirect method.

## General arrangement



## Typical boiler house layout

